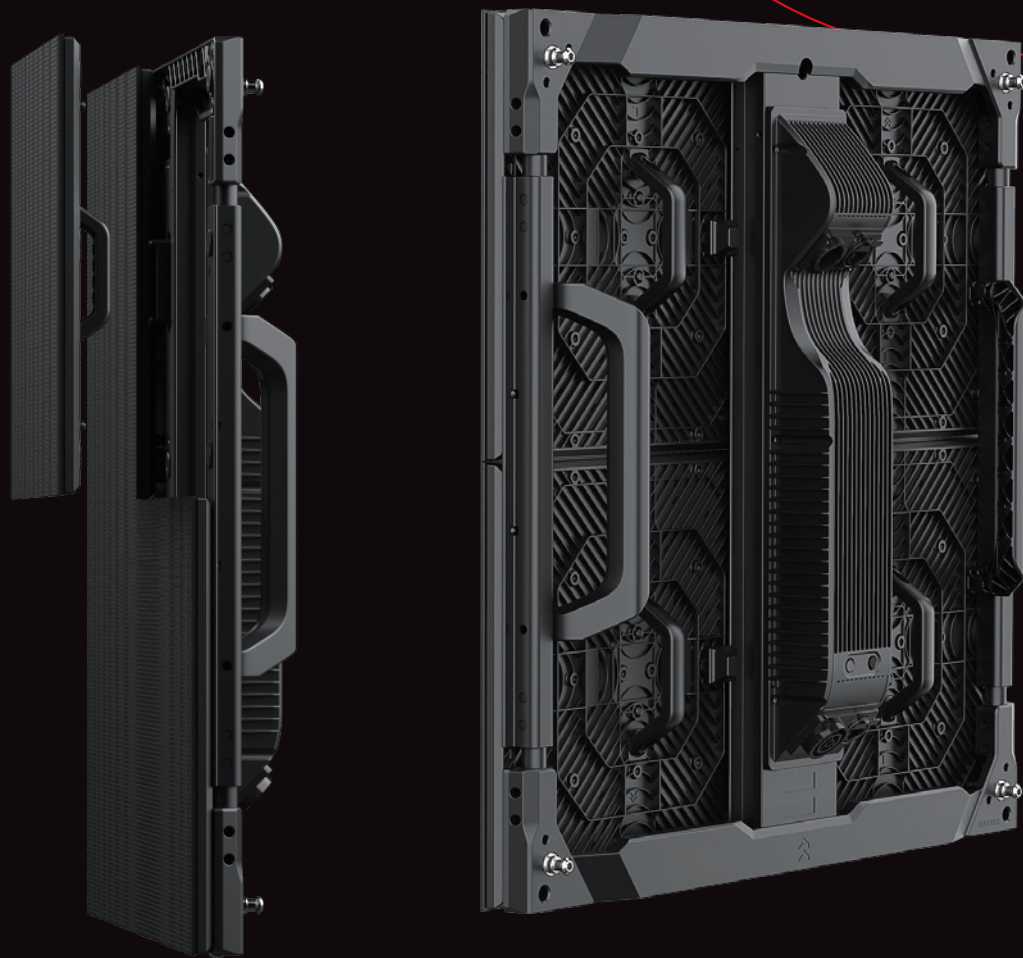




## DIAMOND 2.6

### LIGHTWEIGHT

SMALL-PITCH SOLUTION



#### Diamond 2.6 by ROE Visual offers a lightweight, small-pitch alternative

The lightweight Diamond 2.6(DM2.6) small-pitch LED panel incorporates magnesium alloy frame design for an easy-to-stack or hang solution. It's available in both flat or curved configurations and suitable for indoor configurations. The DM2.6 is the ideal cost-effective LED display solution for rental, staging and fixed applications.

## Diamond 2.6

Lightweight, small-pitch solution



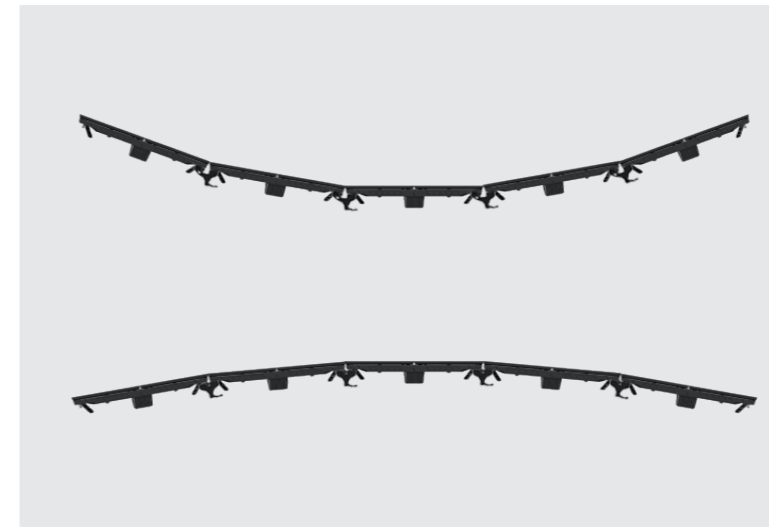
### Ultra-Lightweight

Diamond 2.6 panels measure 500x500mm and weigh less than 5.5kg (12-lbs) per panel. Lightweight magnesium alloy frame ensures extreme durability.



### Superb Visual

The sleek design with Black LED's adds high contrast and brightness for a vivid viewing experience.



### Curving Capability

Concave and convex curving capabilities provide expanded flexibility to realize uniquely creative stage design.



### Magnet-assisted Assembly

Magnets are integrated in to the Diamond panel frame, offering easy setup in both hanging or stacking configurations.

# Specifications

Diamond	DM2.6
Pixel Pitch in mm	2.60
Pixel Density px/m²	147.456
Pixels (H x V) px/panel	192 x 192
LED Configuration	Black SMD (NationStar 1515)
Max. Brightness (Calibrated)	1,500 nits
Gray Scale (Input to Output)	16 bit
Refresh Rate	1,920 Hz
Scan	1/16
Hor. Viewing Angle	140°
Vert. Viewing Angle	140°
Transparency	Solid
PanelSize (W x H x D)	500 x 500 x 81 mm / 19.7" x 19.7" x 3.2"
Frame Material	Magnesium
Weight/panel	5.5 kg; 12.16 lbs
Max. Hanging*1	20 tiles
Max. Stacking*2	8 tiles
Curving (Concave & Convex)	Max. Concave 10°/Max. Convex 5°
Max. Power/panel	180 W
Processor	Evision/Brompton
Operational Temp / Humidity	-20°~ 45°C, 10~90%RH / -4°~113°F, 10~90%RH
IP Rating	IP 40, Indoor
Lifetime	≥50,000 hrs

# Dimensions

